

KNOTWOOD™ CLADDING SYSTEM

PROFILE **KECTJM** **TOP JOINER**



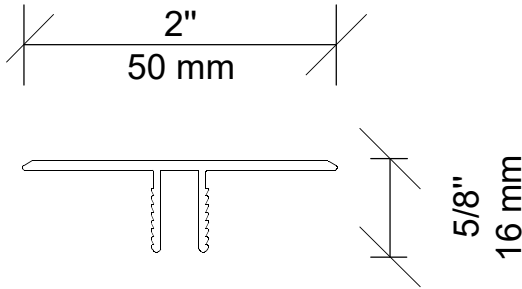
Top Joiner KECTJM (Stock Item)

SPECIFICATIONS

Imperial Size:	2" x 5/8" x 18'6"
Metric Size:	50mm x 16mm x 5650mm
Material Thickness:	1.8mm
Uses:	For siding joints greater than 37" When changing direction of siding To create a panelized look
Weight per Piece:	3.61 LBS / 1.64KG
Weight /Linear Foot:	0.20 LBS / 0.09KG
Case Quantity:	100 Pieces

FEATURES

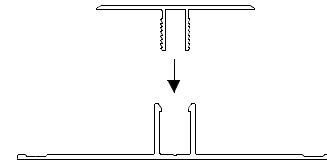
- 18'6" / 5650mm Long
- Covering siding butt joints
- Creating Panelized Look
- Changing siding direction
- 2 part Assembly, Male and Female
- Fastening every 22" or less
- 30+ Woodgrain Colors
- 70+ Solid and Custom Colors



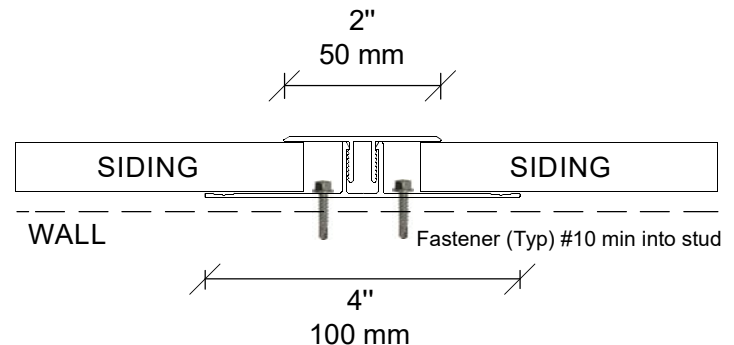
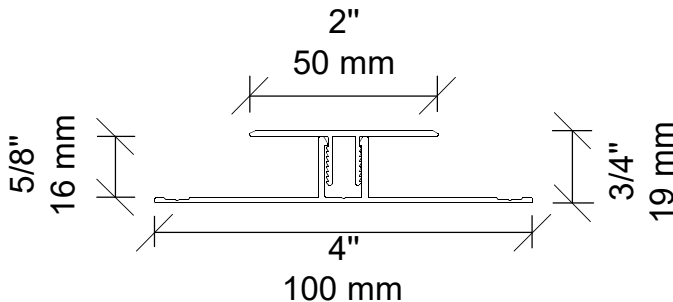
Top Joiner KECTJM is always used with the Joiner Base KECJBF.



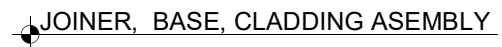
Top Joiner (Male)
KECTJM



Top Joiner Base (Female)
KECJBF



Joiner is used on mitred corners or if changing direction of cladding. Also used to cap end of cladding when more than 2 lengths are butt jointed.



CONTACT INFORMATION
30 Technology Pkwy S.
Suite 400/ Suite 600
Peachtree Corners, GA 30092

1 855 566 8966
WWW.KNOTWOOD.COM

knotwoodinfo@omnimax.com